

Jersey Central[®] Power & Light

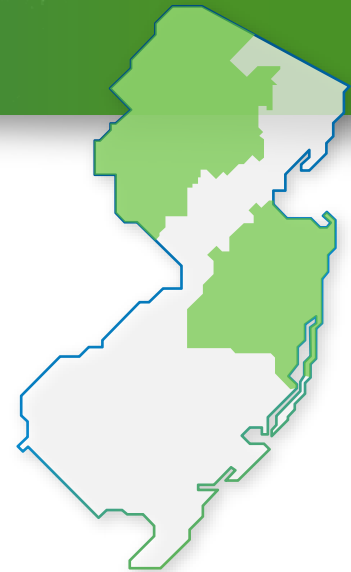
A FirstEnergy Company

Focused on Our Future

JCP&L Rates & Billing Overview

Meeting

Meeting Date

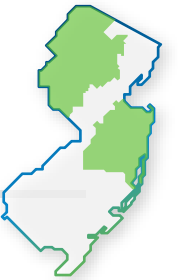


Jersey Central[®]
Power & Light

A FirstEnergy Company

Focused on Our Future

Bills & Rates



Understanding Your Bill

Jersey Central Power & Light
A FirstEnergy Company

Bill Based On: Actual Meter Reading, eBill

January 22, 2025
Account Number: 000 000 000 000
Amount Due: \$113.67
Due Date: February 12, 2025

Bill For: JANE CUSTOMER
1234 ANYWHERE ST
MYTOWN, NJ 00000

Bill Period: Dec 19 to Jan 17, 2025 for 30 days

To report an emergency or an outage, call 24 hours a day 1-888-544-4877.
To read or pay your bill online, scan the QR code or the right of this bill from your mobile device or go to www.firstenergycorp.com.
For Customer Service, call 1-800-633-4755. For Payment Options.

Account Summary

Previous Balance	Amount Due
110.72	
Payments/Adjustments	-110.72
Balance at Billing on Jan 22, 2025	0.00
Jersey Central Power & Light	67.86
Energy Supplier LLC - Consumption	45.81
Total Current Charges	113.67
Amount Due by Feb 12, 2025	\$113.67

Usage Information for Meter Number 00000000

Jan 17, 2025 KWH Reading (Actual)	Dec 19, 2024 KWH Reading (Actual)	KWH used
84,624	83,845	779

Charges From JCP&L

Customer Number: 0000000000 0000000000	Rate: Residential Service JC-RSD
Customer Charge	4.00
Distribution Related Component	41.91
Cost Recovery Charges	22.68
Consumer Rate Credit	-0.73
Current Consumption Bill Charges	67.86

Charges From Energy Supplier LLC

Energy Supplier, LLC	1234 Power St, Somerset, NJ 08873
Customer Service: 1-888-000-0000 <td>Account Number: 00000000 Rate: ESL-0000 </td>	Account Number: 00000000 Rate: ESL-0000
Billing Period: Dec 19, 2024 to Jan 17, 2025	
Basic Charge	779 KWH x 0.058800 45.81
Total Energy Supplier LLC Charges	45.81

Detail Payment and Adjustment Information

Previous Balance	Payments/Adjustments	Current Charges	Amount Due
110.72	-110.72	113.67	113.67

Account Balances by Company

Previous Balance	Payments/Adjustments	Current Charges	Amount Due
JCP&L 65.74	-65.74	67.86	67.86
Energy Supplier LLC 44.98	-44.98	45.81	45.81
Total	110.72	-110.72	113.67

Usage History

Jan 24	Feb 24	Mar 24	Apr 24	May 24	Jun 24	Jul 24	Aug 24	Sep 24	Oct 24	Nov 24	Dec 24	Jan 25
781	465	536	527	804	1319	791	1345	1092	1138	853	796	779

Comparison

Last Year	This Year	
Average Daily Use (KWH)	25	25
Average Daily Temperature	32	27
Days in Billing Period	31	30
Last 12 Months Use (KWH)	10,367	896
Average Monthly Use (KWH)		

Return this part with a check or money order payable to Jersey Central Power & Light

Jersey Central Power & Light
A FirstEnergy Company

300 Madison Avenue
Morristown, NJ 07960

JANE CUSTOMER
1234 ANYWHERE ST
MYTOWN, NJ 00000

Account Number: 000 000 000 000

Amount Paid	Amount Due	Due Date
	\$113.67	Feb 12, 2025

JERSEY CENTRAL POWER & LIGHT
300 MADISON AVENUE
MORRISTOWN, NJ 07960

Account Summary		Amount Due		
Previous Balance		110.72		
Payments/Adjustments		-110.72		
Balance at Billing on Jan 22, 2025		0.00		
Jersey Central Power & Light		67.86		
Energy Supplier LLC - Consumption		45.81		
Total Current Charges		113.67		
Amount Due by Feb 12, 2025		\$113.67		
Usage Information for Meter Number 00000000				
Jan 17, 2025 KWH Reading (Actual)		84,624		
Dec 19, 2024 KWH Reading (Actual)		83,845		
KWH used		779		
Charges From JCP&L				
Customer Number: 0000000000 0000000000				
Rate: Residential Service JC-RSD				
Customer Charge		4.00		
Distribution Related Component		41.91		
Cost Recovery Charges		22.68		
Consumer Rate Credit		-0.73		
Current Consumption Bill Charges		67.86		
Charges From Energy Supplier LLC				
Energy	1234 Power St, Somerset, NJ 08873			
Supplier, LLC	Customer Service: 1-888-000-0000			
	Account Number: 00000000	Rate: ESL-0000		
Billing Period: Dec 19, 2024 to Jan 17, 2025				
Basic Charge	779 KWH x 0.058800	45.81		
Total Energy Supplier LLC Charges		45.81		
Detail Payment and Adjustment Information				
Previous Balance 110.72				
Payments/Adjustments -110.72				
Current Charges 113.67				
Amount Due 113.67				
Account Balances by Company				
	Previous Balance	Payments/Adjustments	Current Charges	Amount Due
JCP&L	65.74	-65.74	67.86	67.86
Energy Supplier LLC	44.98	-44.98	45.81	45.81
Total	110.72	-110.72	113.67	113.67

- Your total bill includes two separate, unique charges:
 - JCP&L Charges:
The cost of delivering electricity to your house
 - +
 - Supplier Charges:
The cost of electricity itself
- JCP&L collects supplier charges, without markup, on behalf of your supplier

JCP&L vs. Supply Rates

Account Summary		Amount Due		
Previous Balance		110.72		
Payments/Adjustments		-110.72		
Balance at Billing on Jan 22, 2025		0.00		
Jersey Central Power & Light		67.86		
Energy Supplier LLC - Consumption		45.81		
Total Current Charges		113.67		
Amount Due by Feb 12, 2025		\$113.67		
Usage Information for Meter Number 00000000				
Jan 17, 2025 KWH Reading (Actual)		84,624		
Dec 19, 2024 KWH Reading (Actual)		83,845		
KWH used		779		
Charges From JCP&L				
Customer Number: 0000000000 0000000000				
Rate: Residential Service JC-RSD				
Customer Charge		4.00		
Distribution Related Component		41.91		
Cost Recovery Charges		22.68		
Consumer Rate Credit		-0.73		
Current Consumption Bill Charges		67.86		
Charges From Energy Supplier LLC				
Energy	1234 Power St, Somerset, NJ 08873			
Supplier, LLC	Customer Service: 1-888-000-0000			
	Account Number: 00000000	Rate: ESL-0000		
Billing Period: Dec 19, 2024 to Jan 17, 2025				
Basic Charge	779 KWH x 0.058800	45.81		
Total Energy Supplier LLC Charges		45.81		
Detail Payment and Adjustment Information				
12/24/24 Payment		-110.72		
Account Balances by Company				
	Previous Balance	Payments/Adjustments	Current Charges	Amount Due
JCP&L	65.74	-65.74	67.86	67.86
Energy Supplier LLC	44.98	-44.98	45.81	45.81
Total	110.72	-110.72	113.67	113.67

■ JCP&L Rates: **increases represent total bill impact*

- June 1, 2024: +3.6%* - settlement of base rate review; First base rate increase in four years
- No new base rate review filed

■ Supply Rates:

- June 1, 2024: +8.7%* - 2024 BGS Auction
- June 1, 2025: +19.9%* - 2025 BGS Auction

■ BGS Rates:

- Default rate for non-shopping customers
- Rate determined by competitive auction
- Commodity auction, influenced by external market conditions
- Legally, state can only certify auction results consistent with market trends

Consumption

Jersey Central Power & Light
A FirstEnergy Company

Bill Based On: Actual Meter Reading, eBill

January 22, 2025
Account Number: 000 000 000 000
Amount Due: \$113.67
Due Date: February 12, 2025

Page 1 of 2

Bill Period: Dec 19 to Jan 17, 2025 for 30 days
Bill For: JANE CUSTOMER
1234 ANYWHERE ST
MYTOWN, NJ 07000

To report an emergency or an outage, call 24 hours a day 1-888-544-4877

Bill based by JCP&L 300 Madison Avenue, Morristown, NJ 07960

To enroll in eBill or pay your bill online, scan the QR code or the right of this bill from your mobile device or go to www.firstenergycorp.com.

For Customer Service, call 1-800-633-4755. For Payment Options, call 1-800-568-3427

Additional messages, if any, can be found on back.

Usage History

Month	Year	Usage (KWH)
Jan	24	791
Feb	24	499
Mar	24	636
Apr	24	637
May	24	804
Jun	24	1,019
Jul	24	1,345
Aug	24	1,092
Sep	24	1,138
Oct	24	850
Nov	24	823
Dec	24	765
Jan	25	779

Account Summary

Previous Balance	Payments/Adjustments	Amount Due
110.72	-110.72	0.00
Jersey Central Power & Light		67.96
Energy Supplier LLC - Consumption		65.61
Total Current Charges		113.67
Amount Due by Feb 12, 2025		\$113.67

Usage Information for Meter Number 00000000

Jan 17, 2025 KWH Reading (Actual)	Dec 19, 2024 KWH Reading (Actual)	KWH Used
84,624	80,945	3,679

Charges From JCP&L

Customer Number: 000000000000000000	Rate: Residential Service JC-RSD	Amount
4.90		
Customer Charge		41.91
Distribution Related Component		22.58
Cost Recovery Charges		4.73
Consumer Risk Credit		67.88
Current Consumption Bill Charges		113.67

Charges From Energy Supplier LLC

Energy Supplier, LLC	1234 Power St, Somerset, NJ 08873	Customer Service: 1-888-400-0000
Account Number: 00000000	Rate: 134-0000	
Bill Period: Dec 19, 2024 to Jan 17, 2025		
Basic Charge	7.9 KWH x 0.05800	45.81
Total Energy Supplier LLC Charges		45.81

Detail Payment and Adjustment Information

10/24/24 Payment	Account Balance by Company	Amount
110.72		110.72
JCP&L		67.96
Energy Supplier LLC		45.81
Total		113.67

Comparisons

Comparison	Last Year	This Year
Average Daily Use (KWH)	26	26
Average Daily Temperature	32	27
Days in Billing Period	31	30
Last 12 Months Use (KWH)		10,387
Average Monthly Use (KWH)		866

Return this part with a check or money order payable to Jersey Central Power & Light

Jersey Central Power & Light
A FirstEnergy Company

300 Madison Avenue
Morristown, NJ 07960

JANE CUSTOMER
1234 ANYWHERE ST
MYTOWN, NJ 07000

Account Number: 000 000 000 000

Amount Paid:

Amount Due: \$113.67

Due Date: Feb 12, 2025

JERSEY CENTRAL POWER & LIGHT
300 MADISON AVENUE
MORRISTOWN, NJ 07960

Additional messages, if any, can be found on back.

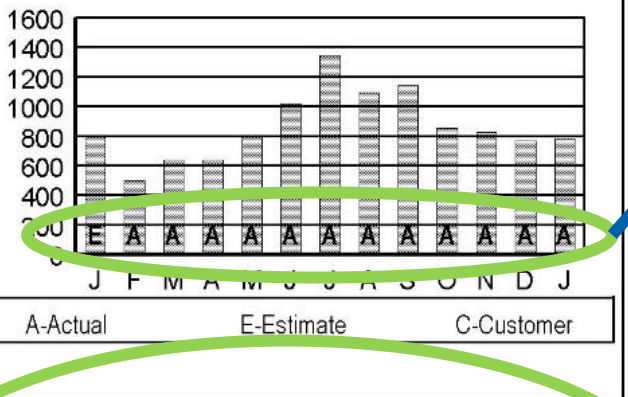
Usage History

Jan 24	791	Jul 24	1,345
Feb 24	499	Aug 24	1,092
Mar 24	636	Sep 24	1,138
Apr 24	637	Oct 24	850
May 24	804	Nov 24	823
Jun 24	1,019	Dec 24	765
		Jan 25	779

How much electricity you use each month

How your meter was read

- A: Actual
- E: Estimated
- C: Customer

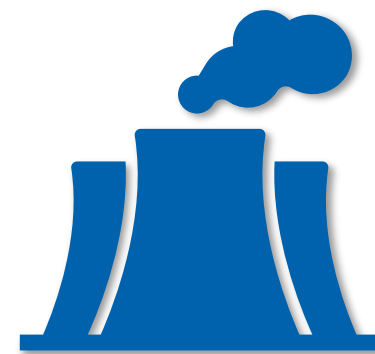


Comparisons		
Average Daily Use (KWH)	Last Year	This Year
Average Daily Temperature	26	26
Days in Billing Period	32	27
Last 12 Months Use (KWH)	31	30
Average Monthly Use (KWH)		10,387
		866

Comparisons & average use

Consumption + Rates = Impact on Bills

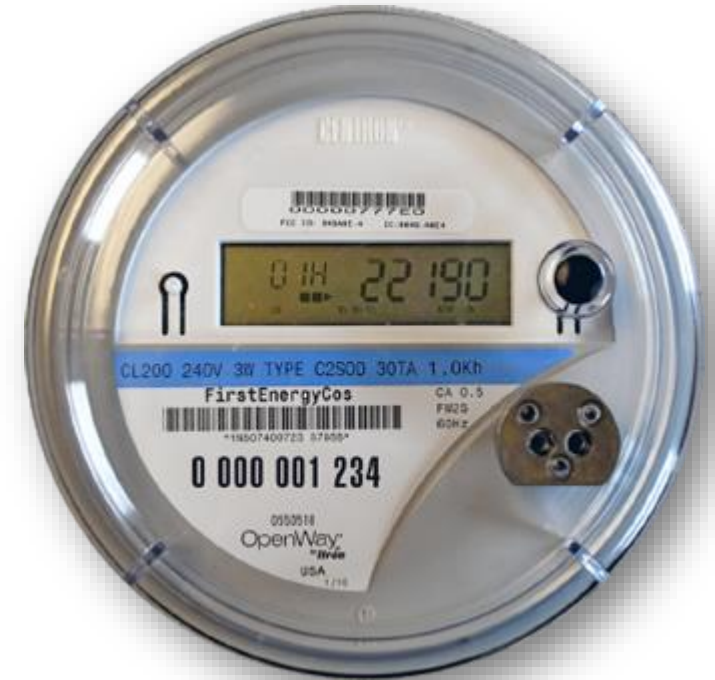
- So far this winter (Dec. 2024 + Jan. 2025), residential consumption is the highest it has been in more than six years:
 - Total residential consumption: +8.4% vs. 2023-2024 avg.
 - Non-electric heat customers: +5% vs. 2023-2024 avg. (Jan. only)
 - Electric heat customers: +11% vs. 2023-2024 avg. (Jan. only)
- At the same time customers are using more energy, the cost of electricity has risen:
 - +8.6% impact from supply rates, +3.6% impact from delivery rates
- Impacts of increased rates + increased consumption on bills (Jan. 2025):
 - Non-electric heat customers: +21.1% vs. January 2024
 - Electric heat customers: +28.5% vs. January 2024



⁶ ■ Coldest January in 11 years, 22nd coldest on record; 5 degrees below average

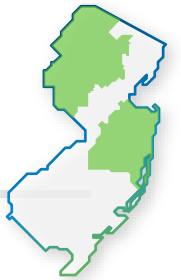
Smart Meters

- No correlation between smart meters and increased electric consumption and bills
 - *Consumption has increased across JCP&L territory, regardless of meter type*
- Smart meters undergo rigorous testing
 - Testing standards developed by the American National Standards Institute; Testing completed using National Institute of Standards and Technology-certified equipment
 - New meters and old/legacy meters tested
 - State-of-the-art technology to ensure accurate readings
- Benefits of smart meters
 - Tools can help customers better understand electric use and help find ways to increase efficiency
 - More accurate billing by reducing estimated bills
 - Meter pinging enhances efficiency of storm restoration process



Focused on Our Future

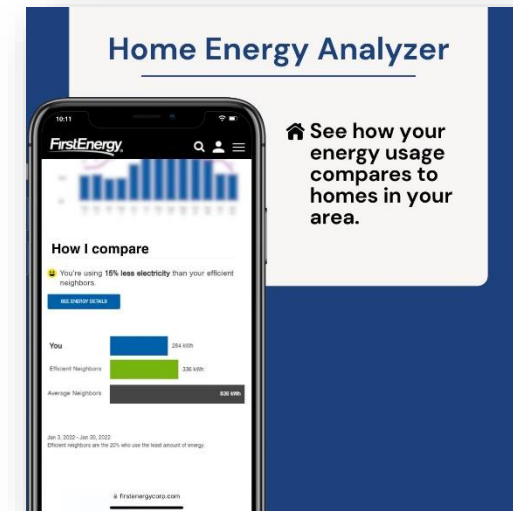
Managing Your Bill



Energy Efficiency

■ JCP&L's Energy Save Program: energysavenj.com

- Appliance rebates & recycling
- Home Energy Analyzer
- HVAC rebates
- Whole home energy solutions
- Home weatherization (Income-Qualified)
- Online marketplace



■ Easy Energy Efficiency Tips: firstenergycorp.com/saveenergy

- Reduce air leaks
- Utilize ceiling fans
- Control radiant heat
- Convection oven = good, crockpots = better
- LED lightbulbs
- Dishwashers > Hand washing dishes

Heating & cooling makes up the largest portion of the average residential electric bill.

**MORE THAN 100 WAYS
TO IMPROVE YOUR
ELECTRIC BILL**

Billing & Payments

- Budget billing/Equal Payment Plan (EPP)

- Billing assistance programs

- USF
- HEAP/LIHEAP
- PAGE
- NJ Shares
- Lifeline
- Comfort Partners & WAP
- 211

2025 Eligibility Guidelines – Percent Poverty Level per Family/Household							
Household Size	60% SMI*	250%	400%	Household Size	60% SMI*	250%	400%
1	\$47,896	\$39,125	\$62,600	5	\$106,845	\$94,125	\$150,600
2	\$62,633	\$52,875	\$84,600	6	\$121,582	\$107,875	\$172,600
3	\$77,370	\$66,625	\$106,600	7	\$124,345	\$121,625	\$194,600
4	\$92,108	\$80,375	\$128,600	8	\$127,109	\$135,375	\$216,600
Income guidelines adjust with additional household members [60% SMI: \$2,763; 250%: \$13,750; 400%: 22,000].							
*SMI = State Median Income; guidelines take effect October 1, 2025.							

- For more information:

- jcp-l.com/assistance
- 1-800-662-3115

Focused on Our Future

Thank You

